

[View PDF](#)

Overglaze

Printing on Porcelain 1750-1800

[Add to My Gallery](#) | [Create an Album](#)



Courtesy of National Museums, Liverpool



[enlarge \[+\]](#)

The print is signed Billinge Sct. Thomas Billinge was in the employment of John Sadler as an engraver. This style of portrait engraving with inscribed scrolls to

either side is associated with Billinge. A few, like this example, are signed.

Shape Type

Miscellaneous

Pattern Type

Commemorative, Heraldic and Historical Events

Date

1761-1765

Dimensions

- Height: 6.70 in (17.02 cm)

Maker

Richard Chaffers and Co Liverpool

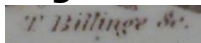
Engraver's Name

Thomas Billinge

Printer's Name

John Sadler

### Engraver's Mark:



Printed

[enlarge \[+\]](#)

### Description:

This Chaffers porcelain jug is printed with a portrait of King George III with a crown above on the spout. It was probably made to commemorate the marriage of King George to Queen Charlotte on the 8th September 1761 and their coronation on the 22nd of the same month.

[BACK TO CATALOG INDEX](#)



Printing on Porcelain 1750-1800

[View All](#)



Commemorative, Heraldic and Historical Events

[View All](#)



Examples by Maker

[View All](#)



Examples by Engraver

[View All](#)



Examples by Printer

[View All](#)



Print Type Indexd

[View All](#)