

[View PDF](#)

Underglaze

Printing on porcelain 1800-1900, printed and painted

[Add to My Gallery](#) | [Create an Album](#)



Shape Type

Dinner & Dessert Wares

Pattern Type

Chinese, Asian and Other Exotic Themes

Date

1820-1833

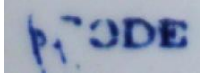
Dimensions

- Diameter: 8.00 in (20.32 cm)

Maker

Spode

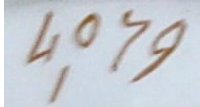
Maker's Mark:



Printed

[enlarge \[+\]](#)

Maker's Mark:



Painted

[enlarge \[+\]](#)

Description:

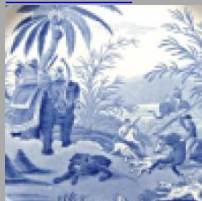
A bone china dessert plate printed in blue on a sheet pattern background known as Parsley. The pattern is named Peacock and is painted underglaze with gild decoration added overglaze. This example is pattern number 4079. Spode first produced this pattern on stoneware and it was taken from an original Chinese export pattern. According to Robert Copeland, the Peacock pattern "is probably the *expand* [+]

[BACK TO CATALOG INDEX](#)



Printing on porcelain 1800-1900

[View All](#)



Chinese, Asian and Other Exotic Themes

[View All](#)



Examples by Maker

[View All](#)



Printed & Painted

[View All](#)



Print Type Indexd

[View All](#)