

[View PDF](#)

Underglaze

Printing in a single color on earthenware and stoneware 1850-1900, printed and painted

[Add to My Gallery](#) | [Create an Album](#)



Additional Image:



[enlarge \[+\]](#)

Shown here is a matching cup and saucer.



[enlarge \[+\]](#)

This smaller version of the barrel shaped teapot was also produced. It is 1.75 inches high and is marked Davenport.

Shape Type

Breakfast & Tea Wares

Pattern Type

Plants

Date

1866-1872

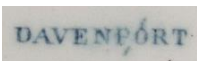
Dimensions

- Height: 4.50 in (11.43 cm)

Maker

Davenport

Maker's Mark:



Printed

[enlarge \[+\]](#)

Description:

An earthenware barrel shaped teapot printed in black with a colorful floral design assigned the name Chrysanthemum Floral Spray in the TCC Pattern & Source Print Database. The printed outline of the pattern was enameled or painted and black matte finished. 1866 is believed to be the year in which these black matte pieces were first produced because some have a dated impressed anchor mark
expand [+]

[BACK TO CATALOG INDEX](#)



Printing in a single color on earthenware and stoneware 1850-1900

[View All](#)



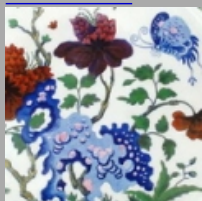
Plants

[View All](#)



Examples by Maker

[View All](#)



Printed & Painted

[View All](#)



Print Type Indexd

[View All](#)