

[View PDF](#)

Victorian Tiles, printed and painted

[Add to My Gallery](#) | [Create an Album](#)



Inv. 2007.4201.24-26. Wilberforce House Museum: Hull Museums

**Additional Image:**



[enlarge \[+\]](#)

Plate from Minton, Hollins & Co. Trade Catalog circa 1875 (National Art Library TL.MIN2.3) © V&A Images/Victoria and Albert Museum.

Shape Type

Miscellaneous

Pattern Type

Chinese, Asian and Other Exotic Themes

Date

1871-1880

Dimensions

- Length: 20.30 in (51.56 cm)
- Width: 20.30 in (51.56 cm)

Maker

Minton Hollins & Co.

### **Description:**

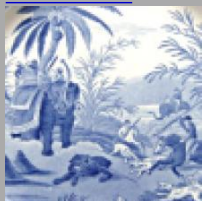
Dust-pressed earthenware, printed in black and hand-painted in various colours with patterns in the Persian style. Impressed mark "MINTON/HOLLINS&CO/PATENT TILE/WORKS/ STOKES ON TRENT" In reviewing the 1867 Paris Exposition, where a large section of display was given to British and French tiles, George Augustus Sala commented on their changing use in the 19th century, from a purely utilitarian fashion to 'following the example of  
*expand [+]*

[BACK TO CATALOG INDEX](#)



Victorian Tiles

[View All](#)



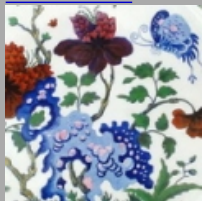
Chinese, Asian and Other Exotic Themes

[View All](#)



Examples by Maker

[View All](#)



Printed & Painted

[View All](#)



Print Type Indexd

[View All](#)