

[View PDF](#)

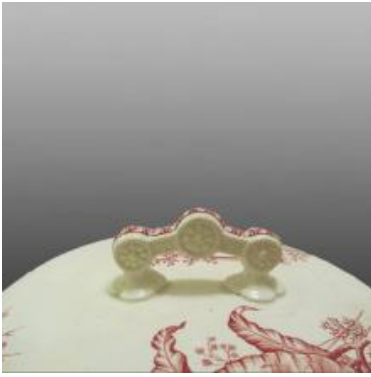
Underglaze

Printing in a single color on earthenware and stoneware 1850-1900

[Add to My Gallery](#) | [Create an Album](#)



Additional Image:



[enlarge \[+\]](#)

Eldon shape molded handle.

Shape Type

Toilet & Personal Hygiene

Pattern Type

Miscellaneous

Date

1884-1890

Dimensions

- Diameter: 9.00 in (22.86 cm)
- Height: 2.50 in (6.35 cm)

Maker

Davenport

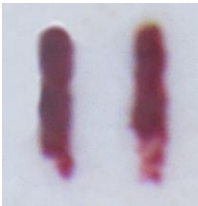
Maker's Mark:



Printed

[enlarge \[+\]](#)

Worker's Mark:



Painted

[enlarge \[+\]](#)

Description:

Chamber pot lid, earthenware with "Eldon" shape handle, transfer printed in burgundy with the named pattern Mersey, design number 4312, registered in 1884. Davenport's became a limited company in the last years of operation.

[BACK TO CATALOG INDEX](#)



Printing in a single color on earthenware and stoneware 1850-1900

[View All](#)



Miscellaneous

[View All](#)



Examples by Maker

[View All](#)



Print Type Indexd

[View All](#)