

[View PDF](#)

Underglaze

Printing in a single color on earthenware and stoneware 1820-1850, printed and painted

[Add to My Gallery](#) | [Create an Album](#)



Pattern



[enlarge \[+\]](#)

Source



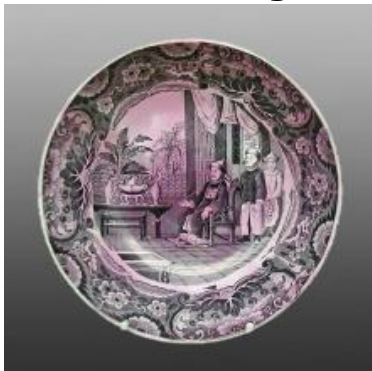
[enlarge \[+\]](#)

Source Description:

Title: Chinese of Rank, A Artist: Daniell, Thomas and William Engraver /

Plate Maker: Daniell, Thomas and William Size: 7.5" x 5" Print Date: 1810

Additional Image:



[enlarge \[+\]](#)

The saucer.



[enlarge \[+\]](#)

Shown here are two sides of a slop bowl from a tea service in the same pattern.

Shape Type

Breakfast & Tea Wares

Pattern Type

Chinese, Asian and Other Exotic Themes

Date

1833-1847

Dimensions

- Diameter: 8.00 in (20.32 cm)

Maker

Copeland & Garrett

Workers Name

WMT28

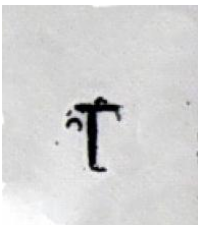
Maker's Mark:



Printed

[enlarge \[+\]](#)

Worker's Mark:



Printed

[enlarge \[+\]](#)

Description:

An earthenware cup and saucer printed in black "shaded" with pink luster wash in a pattern known as both A Chinese of Rank and The Chinaman of Rank. This very rare pattern was first produced by Spode in blue. The pattern number is L.19 and is documented in the Spode pattern book on a cup with pink luster. The source of the center pattern

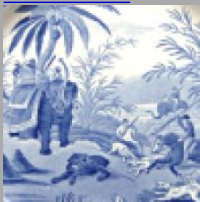
[expand \[+\]](#)

[BACK TO CATALOG INDEX](#)



Printing in a single color on earthenware and stoneware 1820-1850

[View All](#)



Chinese, Asian and Other Exotic Themes

[View All](#)



Examples by Maker

[View All](#)



Examples by Worker

[View All](#)



Printed & Painted

[View All](#)



Print Type Indexd

[View All](#)