

[View PDF](#)

Underglaze

Printing in a single color on earthenware and stoneware 1820-1850

[Add to My Gallery](#) | [Create an Album](#)



Additional Image:



[enlarge \[+\]](#)

Shown here to provide a view of the complete pattern is an eight-sided earthenware platter in the same pattern, dimensions unknown. The registry mark on the ewer and the platter are the same.

Shape Type

Toilet & Personal Hygiene

Pattern Type

Landscapes and Waterscapes

Date

1846-1847

Dimensions

- Height: 13.00 in (33.02 cm)

Maker

George Phillips

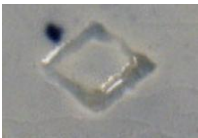
Maker's Mark:



Printed

[enlarge \[+\]](#)

Worker's Mark:



Impressed

[enlarge \[+\]](#)

Description:

An earthenware ewer printed in blue with a pattern named Bejapore. The pattern name is a variant of an Indian place name. The fanciful scene of turreted buildings with lacy trim is surrounded by a border of flowers and leaves. The pattern was registered in 1846, one year before the factory ceased operations under the George Phillips name. It was printed on dinner,

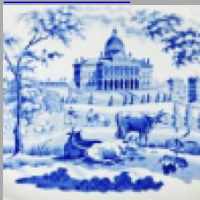
[expand \[+\]](#)

[BACK TO CATALOG INDEX](#)



Printing in a single color on earthenware and stoneware 1820-1850

[View All](#)



Landscapes and Waterscapes

[View All](#)



Examples by Maker

[View All](#)



Print Type Indexd

[View All](#)