

[View PDF](#)

Underglaze

Printing in a single color on earthenware and stoneware 1780-1820, printed and painted

[Add to My Gallery](#) | [Create an Album](#)



Pattern



[enlarge \[+\]](#)

Source



[enlarge \[+\]](#)

Source Description:

A Chinese export porcelain platter with the painted version of the Elephant Rock design that served as the source for the Dillwyn & Co. plate shown above. This faithful reproduction of the Chinese original also relies on the floral border pattern and inner border of the Chinese original design.

Shape Type

Dinner & Dessert Wares

Pattern Type

Chinese, Asian and Other Exotic Themes

Date

1805-1820

Dimensions

- Diameter: 9.25 in (23.50 cm)

Maker

Dillwyn & Co.

Description:

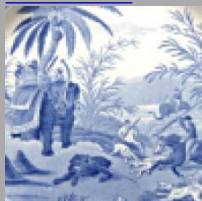
An indented earthenware plate printed in blue with the Elephant Rock pattern, sometimes referred to simply as Elephant. Ochre enameling has been applied to the edge. The pattern features a willow tree in the center, a large chrysanthemum and a slightly smaller flower, a fence and two rock formations that just happen to resemble elephants, hence the name, Elephant Rock.

[BACK TO CATALOG INDEX](#)



Printing in a single color on earthenware and stoneware 1780-1820

[View All](#)



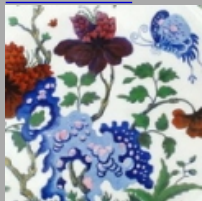
Chinese, Asian and Other Exotic Themes

[View All](#)



Examples by Maker

[View All](#)



Printed & Painted

[View All](#)



Print Type Indexd

[View All](#)