

[View PDF](#)

Underglaze

Printing in a single color on earthenware and stoneware 1780-1820

[Add to My Gallery](#) | [Create an Album](#)



Additional Image:



[enlarge \[+\]](#)

A close-up of the pattern fragment printed in the molded and painted oval.



[enlarge \[+\]](#)

A close-up of a second pattern fragment printed in the molded and painted oval.

Shape Type

Miscellaneous

Pattern Type

Chinese, Asian and Other Exotic Themes

Date

1795-1805

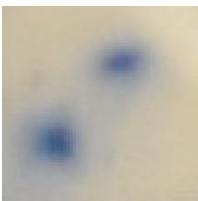
Dimensions

- Height: 11.00 in (27.94 cm)

Maker

Minton

Worker's Mark:



Painted

[enlarge \[+\]](#)

Description:

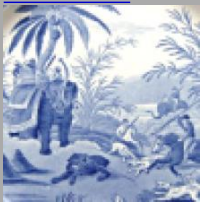
A rare pearlware obelisk-shaped ornamental printed in blue with small portions of a Chinoiserie pattern and with a butterfly or moth motif border printed on the molded base and top of the plinth both of which have been identified as Minton's Trench Mortar pattern. This type of ornamental can frequently be found with overglaze painted designs, but late 18th century underglaze printed examples are [expand \[+\]](#)

[BACK TO CATALOG INDEX](#)



Printing in a single color on earthenware and stoneware 1780-1820

[View All](#)



Chinese, Asian and Other Exotic Themes

[View All](#)



Examples by Maker

[View All](#)



Print Type Index

[View All](#)