

[View PDF](#)

Underglaze

Printing in a single color on earthenware and stoneware 1850-1900, printed and painted

[Add to My Gallery](#) | [Create an Album](#)



**Additional Image:**



[enlarge \[+\]](#)

A view of the side of the mug revealing more of the printed pattern.



[enlarge \[+\]](#)

A close-up of the printed pattern.

Shape Type

Miscellaneous

Pattern Type

Plants

Date

1851-1870

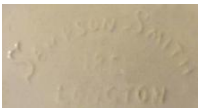
Dimensions

- Height: 9.25 in (23.50 cm)

Maker

Sampson Smith

**Maker's Mark:**



Embossed

[enlarge \[+\]](#)

**Description:**

A rare molded earthenware Toby mug printed in blue with a floral chintz-type pattern on the jacket and on the brim of the tri-corner hat. The other surfaces on the remainder of the body were hand painted overglaze. The original lid is missing from this example. The figure holds a jug of ale. Sampson Smith, Longton, produced a large number of Toby-shaped mugs, modeled after

*expand* [+]

BACK TO CATALOG INDEX



Printing in a single color on earthenware and stoneware 1850-1900

[View All](#)



Plants

[View All](#)



Examples by Maker

[View All](#)



Printed & Painted

[View All](#)



Print Type Indexd

[View All](#)