

[View PDF](#)

Underglaze

Printing in a single color on earthenware and stoneware 1850-1900, printed and painted

[Add to My Gallery](#) | [Create an Album](#)



**Additional Image:**



[enlarge \[+\]](#)

A view of the mug from the front with the tri-corner hat removed.



[enlarge \[+\]](#)

Shown here are three examples of the Toby mug in different sizes and a smaller Snuff Taker mug. All are printed in blue with the Standard Willow pattern.

Shape Type

Miscellaneous

Pattern Type

Chinese, Asian and Other Exotic Themes

Date

1851-1870

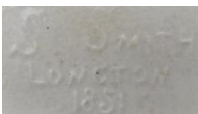
Dimensions

- Height: 8.50 in (21.59 cm)

Maker

Sampson Smith

**Maker's Mark:**



Embossed

[enlarge \[+\]](#)

## Description:

A rare molded earthenware Toby mug printed in blue with the Standard Willow pattern on the jacket and the companion border pattern on the brim of the tri-corner hat. The other surfaces on the remainder of the body were hand painted overglaze. The original lid was painted underglaze in black. The figure holds a jug of ale. Sampson Smith, Longton, produced a large number of  
*expand [+]*

[BACK TO CATALOG INDEX](#)



Printing in a single color on earthenware and stoneware 1850-1900

[View All](#)



Chinese, Asian and Other Exotic Themes

[View All](#)



Examples by Maker

[View All](#)



Printed & Painted

[View All](#)



Print Type Indexd

[View All](#)