

[View PDF](#)

Underglaze

Printing in a single color on earthenware and stoneware 1850-1900

[Add to My Gallery](#) | [Create an Album](#)



Shape Type

Dinner & Dessert Wares

Pattern Type

Plants

Date

1882

Dimensions

- Diameter: 9.50 in (24.13 cm)

Maker

W. H. Grindley & Co.

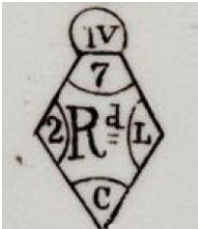
Maker's Mark:



Printed

[enlarge \[+\]](#)

Maker's Mark:



Printed

[enlarge \[+\]](#)

Description:

An earthenware soup plate printed in brown with one of the designs from Grindley's Daffodil Series. The registry diamond dates the pattern to January 7, 1882. This floral Aesthetic pattern features a large daffodil on the left hand side and a castle on the right which overlooks a lake with a sailboat. Distant buildings are included in the background. Daffodils are also found in

[expand \[+\]](#)

[BACK TO CATALOG INDEX](#)



Printing in a single color on earthenware and stoneware 1850-1900

[View All](#)



Plants

[View All](#)



Examples by Maker

[View All](#)



Print Type Indexd

[View All](#)