

[View PDF](#)

Underglaze

Printing in a single color on earthenware and stoneware 1780-1820

[Add to My Gallery](#) | [Create an Album](#)



Additional Image:



[enlarge \[+\]](#)

A view of the bubby pot revealing the perforated spout.



[enlarge \[+\]](#)

Shown here is a 3.75 inch cup plate in the same pattern. The mark shown above is found on this cup plate. The bubby pot, as is common for vessels, is not marked.

Shape Type

Miscellaneous

Pattern Type

Genre Scenes

Date

1810-1820

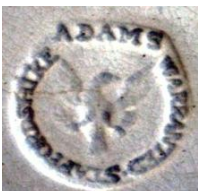
Dimensions

- Height: 4.50 in (11.43 cm)

Maker

William Adams & Sons

Maker's Mark:



Impressed

[enlarge \[+\]](#)

Description:

A rare earthenware bubbly pot printed in blue in the Gables Farm pattern. The pattern has a double helix border with florets and quatrefoils. Used for feeding infants, bubbly pots are shaped somewhat like a coffee pot with a lid. The spout is often quite elongated and has a closed, perforated spout. The spout was covered with cloth, which served as a nipple. In this genre

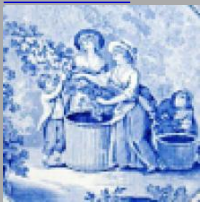
[expand \[+\]](#)

[BACK TO CATALOG INDEX](#)



Printing in a single color on earthenware and stoneware 1780-1820

[View All](#)



Genre Scenes

[View All](#)



Examples by Maker

[View All](#)



Print Type Index

[View All](#)