

[View PDF](#)

Overglaze

Printing on Porcelain 1800-1900

[Add to My Gallery](#) | [Create an Album](#)



collection of Potteries Museum & Art Gallery, Stoke-on-Trent

Shape Type

Breakfast & Tea Wares

Pattern Type

Chinese, Asian and Other Exotic Themes

Date

1884-1890

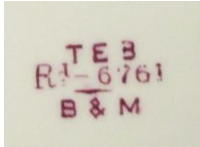
## Dimensions

- Diameter: 13.00 in (33.02 cm)
- Height: 6.80 in (17.27 cm)

## Maker

Burton & Morris

## Maker's Mark:



Printed

[enlarge \[+\]](#)

## Description:

Bone china cup and saucer with printed design in purplish-red. The pattern has elements reflecting the arts and craft interest in Japanese design, especially the inclusion of the sunflowers which appear in three vignettes around the saucer and on the front of the cup. However the designer has not committed completely to Japonism, and includes more benign elements of flowering branches with birds. The mark

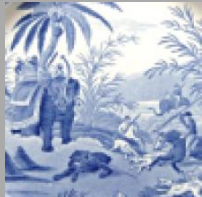
[expand \[+\]](#)

[BACK TO CATALOG INDEX](#)



Printing on Porcelain 1800-1900

[View All](#)



Chinese, Asian and Other Exotic Themes

[View All](#)



Examples by Maker

[View All](#)



Print Type Indexd

[View All](#)