

[View PDF](#)

Underglaze

Printing on porcelain 1750-1800

[Add to My Gallery](#) | [Create an Album](#)



**Additional Image:**



[enlarge \[+\]](#)

One of three different floral sprays used as a border on the butterboat.



[enlarge \[+\]](#)

Another border spray.

Shape Type

Dinner & Dessert Wares

Pattern Type

Plants

Date

1757-1760

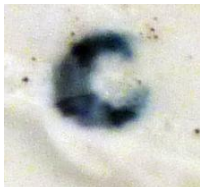
Dimensions

- Length: 3.13 in (7.95 cm)

Maker

Worcester

#### **Maker's Mark:**



Printed

[enlarge \[+\]](#)

#### **Description:**

This small leaf-shaped deep dish is thought to be a butterboat for the serving of melted butter. It bears a rare floral print that incorporates two small birds. Branyan, French and Sandon classify this very rare pattern as a variation of the not uncommon Early Creamboat Sprays. This is the only instance in their book where they classify two patterns that have substantial differences under the one name.

[expand \[+\]](#)

[BACK TO CATALOG INDEX](#)



Printing on porcelain 1750-1800

[View All](#)



Plants

[View All](#)



Examples by Maker

[View All](#)



Print Type Indexd

[View All](#)