

[View PDF](#)

Overglaze

Printing on Porcelain 1800-1900

[Add to My Gallery](#) | [Create an Album](#)



**Additional Image:**



[enlarge \[+\]](#)

This is an example of a plate from a similar Minton dessert service. It is not gilded or pierced and is bat printed in charcoal grey with identical prints. It would have a different pattern number but is unmarked.

Shape Type

Dinner & Dessert Wares

Pattern Type

Plants

Date

1822 - 1825

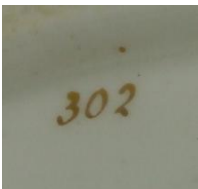
Dimensions

- Height: 1.75 in (4.45 cm)
- Length: 10.50 in (26.67 cm)
- Width: 7.75 in (19.69 cm)

Maker

Minton

**Maker's Mark:**



Painted

[enlarge \[+\]](#)

**Description:**

A porcelain oval dessert dish in pattern number 302. The dish has a dropped shell molded pierced rim. Bat printed overglaze in sepia with central flower print and four smaller flower prints around the rim, additional gilding. Marked on the base with 302 handpainted in gold.

## BACK TO CATALOG INDEX



Printing on Porcelain 1800-1900

[View All](#)



Plants

[View All](#)



Examples by Maker

[View All](#)



Print Type Indexd

[View All](#)