

[View PDF](#)

Underglaze

Printing in a single color on earthenware and stoneware 1850-1900, printed and painted

[Add to My Gallery](#) | [Create an Album](#)



collection of Potteries Museum & Art Gallery, Stoke-on-Trent

**Additional Image:**



[enlarge \[+\]](#)

The additional mark of the French retailer.

Shape Type

Dinner & Dessert Wares

Pattern Type

Chinese, Asian and Other Exotic Themes

Date

1884-1885

Dimensions

- Diameter: 24.00 in (60.96 cm)

Maker

Gildea & Walker

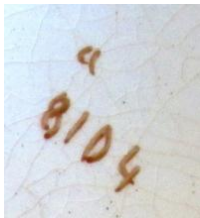
**Maker's Mark:**



Printed

[enlarge \[+\]](#)

**Maker's Mark:**



Painted

[enlarge \[+\]](#)

**Description:**

An earthenware plate with transfer-printed decoration in brown, highlighted with orange luster washes, and with blue, green, yellow and red enamel painting. The reverse of the plate has six marks; a printed diamond registration mark for 27th August 1879; an impressed month and date numeral for April 1884; the impressed name GILDEA & WALKER; the impressed name IVORY for the name of the earthenware

[expand \[+\]](#)

[BACK TO CATALOG INDEX](#)



Printing in a single color on earthenware and stoneware 1850-1900

[View All](#)



Chinese, Asian and Other Exotic Themes

[View All](#)



Examples by Maker

[View All](#)



Printed & Painted

[View All](#)



Print Type Indexd

[View All](#)