

[View PDF](#)

Overglaze

Printing on Porcelain 1800-1900

[Add to My Gallery](#) | [Create an Album](#)



**Additional Image:**



[enlarge \[+\]](#)

Detail of the cottage print on the cover.

Shape Type

Breakfast & Tea Wares

Pattern Type

Literature, Classical, Mythology, and the Arts

Date

1820-1825

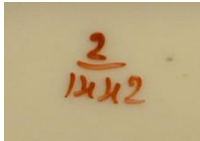
Dimensions

- Length: 19.00 in (48.26 cm)

Maker

Ridgway

**Maker's Mark:**



Painted

[enlarge \[+\]](#)

**Description:**

A bone china handled sugar box bat-printed in warm brown with a young girl on a see-saw with Cupid. The sharply pointed handles, flower finial and rim are picked out in brown enamel. There is a smaller bat print on the cover.

[BACK TO CATALOG INDEX](#)



Printing on Porcelain 1800-1900

[View All](#)



Literature, Classical, Mythology, and the Arts

[View All](#)



Examples by Maker

[View All](#)



Print Type Indexd

[View All](#)