

[View PDF](#)

Overglaze

Printing on Porcelain 1800-1900

[Add to My Gallery](#) | [Create an Album](#)



Additional Image:



[enlarge \[+\]](#)

View of the can showing the decoration inside.

Shape Type

Breakfast & Tea Wares

Pattern Type

Naval and Marine

Date

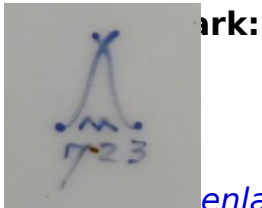
1810-1812

Dimensions

- Height: 6.30 in (16.00 cm)

Maker

Minton



[enlarge \[+\]](#)

Description:

A bone china coffee can and saucer bat-printed in warm brown with shells in reserves out of a finely gilded ground. The base with blue enamel painted Minton mark and pattern number 1723.

[BACK TO CATALOG INDEX](#)



Printing on Porcelain 1800-1900

[View All](#)



Naval and Marine

[View All](#)



Examples by Maker

[View All](#)



Print Type Indexd

[View All](#)