

[View PDF](#)

Underglaze

Printing in a single color on earthenware and stoneware 1850-1900

[Add to My Gallery](#) | [Create an Album](#)



Additional Image:



[enlarge \[+\]](#)

A view of the opposite side of the jug.



[enlarge \[+\]](#)

An additional perspective revealing the handle. This image also reveals the narrow geometric border.

Shape Type

Toilet & Personal Hygiene

Pattern Type

Miscellaneous

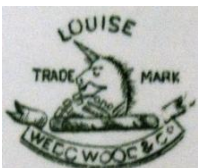
Date

1881-1885

Maker

Josiah Wedgwood & Co.

Maker's Mark:



Printed

[enlarge \[+\]](#)

Maker's Mark:



Printed

[enlarge](#) [+]

Description:

An earthenware water jug printed in green in a pattern named Louise. This pattern was registered by Wedgwood and Co. in April of 1881. Pattern elements are asymmetrically placed on the body and neck of the vessel. A large bird positioned on a branch appears twice, once on the body, as shown here, and again on the neck of the jug (see below). The

[expand](#) [+]

[BACK TO CATALOG INDEX](#)



Printing in a single color on earthenware and stoneware 1850-1900

[View All](#)



Miscellaneous

[View All](#)



Examples by Maker

[View All](#)



Print Type Indexd

[View All](#)