

[View PDF](#)

Underglaze

Printing in a single color on earthenware and stoneware 1780-1820, printed and painted

[Add to My Gallery](#) | [Create an Album](#)



Pattern



[enlarge \[+\]](#)

Source

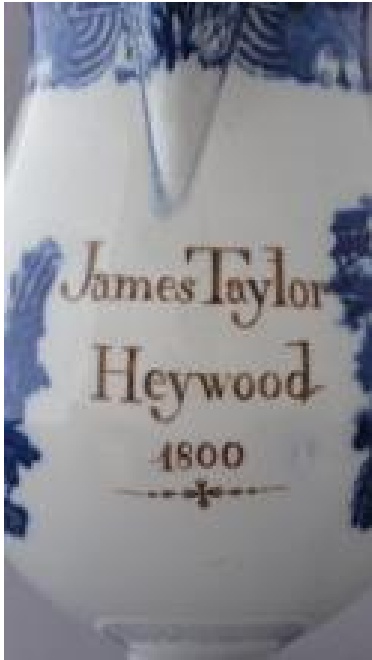


[enlarge \[+\]](#)

Source Description:

This octagonal plate bears the complete Chinese hand-painted pattern used as a basis for Chinaman with Rocket and its variations.

Additional Image:



[enlarge \[+\]](#)

A close-up of the name and date painted on the jug.



[enlarge \[+\]](#)

One side of the jug revealing the Rocket pattern. The pattern is repeated on the other side.

Shape Type

Miscellaneous

Pattern Type

Chinese, Asian and Other Exotic Themes

Date

1800

Dimensions

- Height: 8.50 in (21.59 cm)

Maker

Unknown

Description:

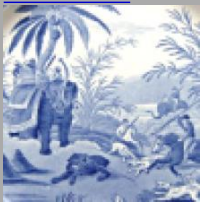
A pearlware commemorative jug printed in blue with a line engraved Chinaman with Rocket pattern. This pattern was produced on pearlware by several unknown potters and by Ralph Stevenson and Minton. It is most commonly found on hollow ware. The border, known as the Bell Border, is usually found with this pattern. The Chinaman with Rocket pattern originated in the late 18th century and has its *expand* [+]

[BACK TO CATALOG INDEX](#)



Printing in a single color on earthenware and stoneware 1780-1820

[View All](#)



Chinese, Asian and Other Exotic Themes

[View All](#)



Examples by Maker

[View All](#)



Printed & Painted

[View All](#)



Print Type Indexd

[View All](#)