

[View PDF](#)

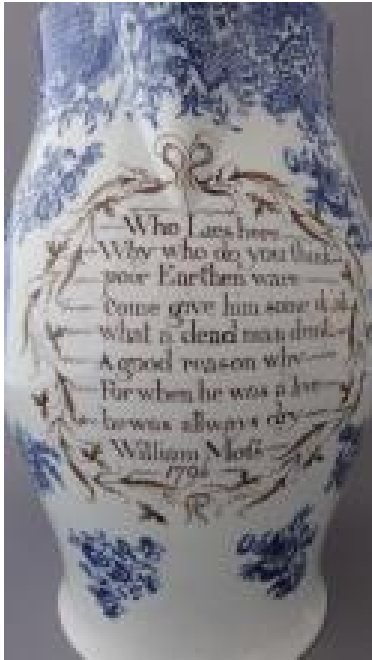
Underglaze

Printing in a single color on earthenware and stoneware 1780-1820, printed and painted

[Add to My Gallery](#) | [Create an Album](#)



Additional Image:



[enlarge \[+\]](#)

Painted underglaze in brown, the epitaph reads as follows: "Who lies here Why who do you think poor Earthen ware come give him some drink What a dead man drink A good reason why for when he was alive he was always dry William Mofs 1796" The epitaph is framed with a decorative, hand painted border consisting of flowers, leaves and tendrils.



[enlarge \[+\]](#)

A view of the large jug revealing the various floral sprays that were added to the piece to fill in and enhance the early Chinoiserie design.

Shape Type

Miscellaneous

Pattern Type

Chinese, Asian and Other Exotic Themes

Date

1796

Dimensions

- Diameter: 9.00 in (22.86 cm)
- Height: 12.75 in (32.39 cm)

Maker

Unknown

Description:

A rare, large pearlware commemorative jug printed in blue with the Buffalo, or Boy on a Buffalo, pattern. Printed on the outer rim is a large and elaborate butterfly border pattern with a modified version of the latter on the inner rim. Floral sprays in four distinct patterns are printed around the jug in areas that are not covered by the central pattern. The pattern on the

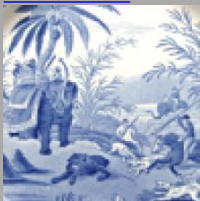
expand [+]

[BACK TO CATALOG INDEX](#)



Printing in a single color on earthenware and stoneware 1780-1820

[View All](#)



Chinese, Asian and Other Exotic Themes

[View All](#)



Examples by Maker

[View All](#)



Printed & Painted

[View All](#)



Print Type Indexd

[View All](#)