

[View PDF](#)

Overglaze

Printing on Earthenware and Stoneware 1800-1900

[Add to My Gallery](#) | [Create an Album](#)



collection of Potteries Museum & Art Gallery, Stoke-on-Trent

Additional Image:



[enlarge \[+\]](#)

Reverse of the jug showing the same print.

Shape Type

Miscellaneous

Pattern Type

Literature, Classical, Mythology, and the Arts

Date

1795-1805

Dimensions

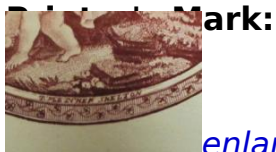
- Height: 17.20 in (43.69 cm)

Maker

Unknown

Printer's Name

Thomas Fletcher



Description:

Pearlware jug, the neck with turned bands painted in red and brown enamels. Each side is printed in brown with an oval framed scene of cupids at play, signed at the bottom of the image within the frame, "T FLETCHER SHELTON". The jug has traces of painted gilt leaf sprays.

[BACK TO CATALOG INDEX](#)



Printing on Earthenware and Stoneware 1800-1900

[View All](#)



Literature, Classical, Mythology, and the Arts

[View All](#)



Examples by Maker

[View All](#)



Examples by Printer

[View All](#)



Print Type Indexd

[View All](#)