

[View PDF](#)

Overglaze

Printing on Earthenware and Stoneware 1800-1900, printed and painted

[Add to My Gallery](#) | [Create an Album](#)



National Maritime Museum, Greenwich, London, Walter Collection

**Pattern**



[enlarge \[+\]](#)

### Source



[enlarge \[+\]](#)

### Source Description:

West View of the Cast Iron Bridge built by Rowland Burdon, M.P. over the River Wear at Sunderland, J. Raffield, etching and aquatint, with hand-coloring, circa 1798

Shape Type

Miscellaneous

Pattern Type

Commemorative, Heraldic and Historical Events

Date

1813-1819

Dimensions

- Height: 22.00 in (55.88 cm)

Maker

Dixon & Co

### Maker's Mark:



Printed

[enlarge \[+\]](#)

**Description:**

Jug, transfer-printed in black and hand-colored, and with black, hand painted bands around the neck. On one side is a view of the Wearmouth bridge inscribed: "A West VIEW of the IRON BRIDGE over the WEAR under the patronage of R. BURDON Esq MP., Span 230 feet ht 100, Cast 214 Tons Wt 46". At the bottom center of the print is the inscription

[expand \[+\]](#)

[BACK TO CATALOG INDEX](#)



Printing on Earthenware and Stoneware 1800-1900

[View All](#)



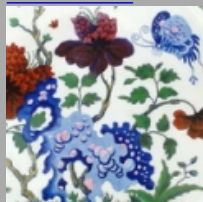
Commemorative, Heraldic and Historical Events

[View All](#)



Examples by Maker

[View All](#)



Printed & Painted

[View All](#)



Print Type Indexd

[View All](#)