

[View PDF](#)

Overglaze

Printing on Earthenware and Stoneware 1800-1900

[Add to My Gallery](#) | [Create an Album](#)



collection of Potteries Museum & Art Gallery, Stoke-on-Trent

Additional Image:



[enlarge \[+\]](#)

Detail of print.



[enlarge \[+\]](#)

Reverse with print of George Washington on horseback.

Shape Type

Miscellaneous

Pattern Type

Miscellaneous

Date

1800-1805

Dimensions

- Height: 23.20 in (58.93 cm)

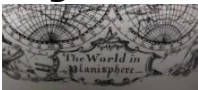
Maker

Unknown

Engraver's Name

Radford

Engraver's Mark:



Printed

[enlarge \[+\]](#)

Description:

Creamware jug, printed in black with "The World in Planisphere". Inscribed beneath the globe on the left is the word "Engraved" and on the right "by Radford". At each corner of the image of the world is an allegory of one of the four continents. This subject is seen in a number of different engravings, but this is the only one with a recorded signature.

expand [+]

[BACK TO CATALOG INDEX](#)



Printing on Earthenware and Stoneware 1800-1900

[View All](#)



Miscellaneous

[View All](#)



Examples by Maker

[View All](#)



Examples by Engraver

[View All](#)



Print Type Indexd

[View All](#)