

[View PDF](#)

Underglaze

Printing in a single color on earthenware and stoneware 1820-1850

[Add to My Gallery](#) | [Create an Album](#)



Shape Type

Dinner & Dessert Wares

Pattern Type

Landscapes and Waterscapes

Date

1820-1846

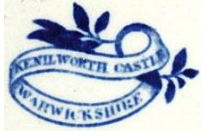
Dimensions

- Diameter: 5.60 in (14.22 cm)

Maker

Enoch Wood & Sons

Maker's Mark:



Printed

[enlarge \[+\]](#)

Description:

A small earthenware plate printed in blue in the named view Kenilworth Castle, Warwickshire. This view was also printed on a 4.5 inch cup plate. Kenilworth Castle was built in the 1120s by Geoffrey de Clinton. It had a long and eventful history, until it was destroyed during the English Civil War in 1656. Queen Elizabeth I visited the castle at least four times, and

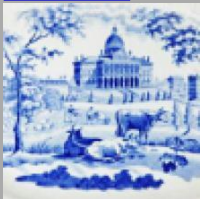
[expand \[+\]](#)

[BACK TO CATALOG INDEX](#)



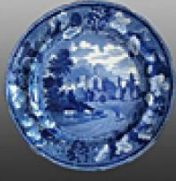
Printing in a single color on earthenware and stoneware 1820-1850

[View All](#)



Landscapes and Waterscapes

[View All](#)



Grapevine Border - Enoch Wood & Sons

[View All](#)



Examples by Maker

[View All](#)



Print Type Indexd

[View All](#)