

[View PDF](#)

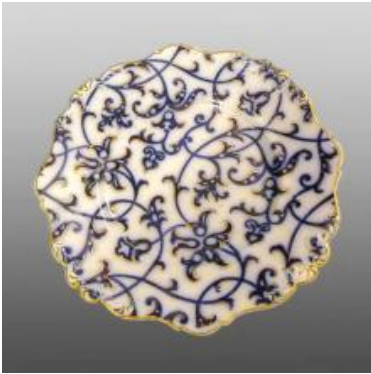
Underglaze

Printing in a single color on earthenware and stoneware 1820-1850

[Add to My Gallery](#) | [Create an Album](#)



Additional Image:



[enlarge \[+\]](#)

The same pattern, Royal Lily, is seen here on a molded and gilded dessert plate.



[enlarge \[+\]](#)

Shown here is a small jug in the same pattern which is marked with the pattern name Royal Lily, included above as an additional mark. Until this marked example was discovered, the pattern had always been known as Bluebell.

Shape Type

Miscellaneous

Pattern Type

Plants

Date

1834-1854

Dimensions

- Height: 10.00 in (25.40 cm)

Maker

William Ridgway & Co Bell Works

Maker's Mark:



Impressed

[enlarge \[+\]](#)

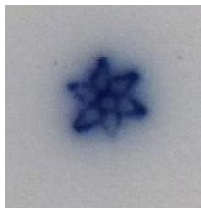
Maker's Mark:



Printed

[enlarge \[+\]](#)

Worker's Mark:



Printed

[enlarge \[+\]](#)

Description:

A large earthenware syrup pitcher printed in flow blue in the Royal Lily pattern with gilding. The handle was painted in a light blue ground and has molded terminals consisting of clusters of grapes and leaves. Metal lid with handle. Two additional examples of this pattern are shown below. The name "Opaque Granite China" is included in the mark and refers to the

[expand \[+\]](#)

BACK TO CATALOG INDEX



Printing in a single color on earthenware and stoneware 1820-1850

[View All](#)



Plants

[View All](#)



Examples by Maker

[View All](#)



Print Type Indexd

[View All](#)