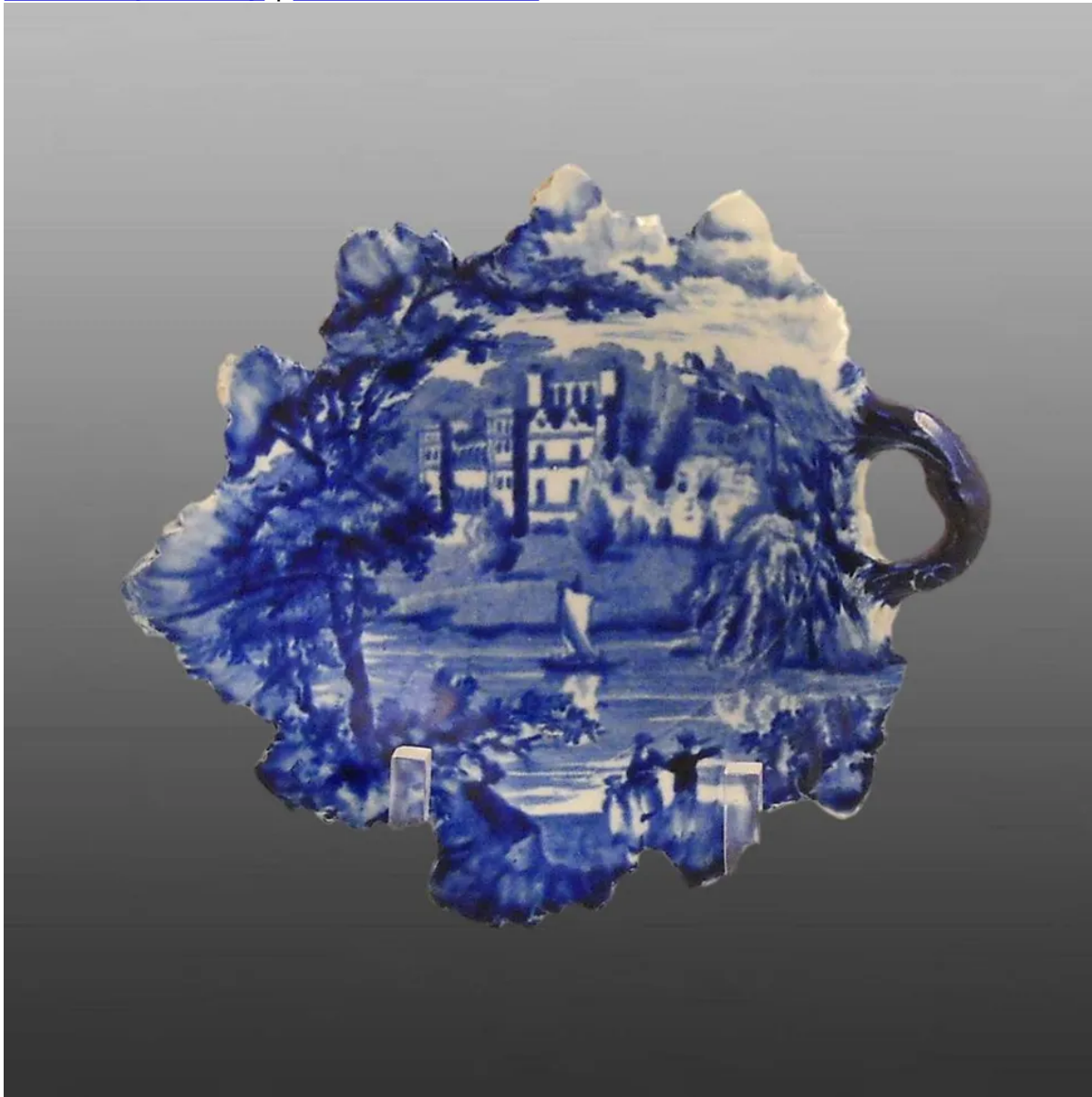


[View PDF](#)

Underglaze

Printing in a single color on earthenware and stoneware 1820-1850

[Add to My Gallery](#) | [Create an Album](#)



Pattern



[enlarge \[+\]](#)

Source



[enlarge \[+\]](#)

Source Description:

Guy's Cliff, Warwickshire, from John Preston Neale's Views of the Seats of Noblemen and Gentlemen in England and Wales, Scotland and Ireland. This house was built in 1751 in the Palladian style and additions were made up until 1818. It is now in ruins.

Additional Image:



[enlarge \[+\]](#)

Guy's Cliff, Warwickshire, printed on a 10 inch plate.

Shape Type

Dinner & Dessert Wares

Pattern Type

Landscapes and Waterscapes

Date

1820-1846

Dimensions

- Height: 1.50 in (3.81 cm)
- Length: 5.75 in (14.61 cm)
- Width: 5.00 in (12.70 cm)

Maker

Enoch Wood & Sons

Description:

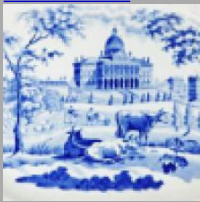
A molded earthenware leaf-shaped dish printed in blue with the named view Guy's Cliff, Warwickshire. This scene was also printed on a 10 inch plate and a 10 inch soup plate. The source print for this pattern is from John Preston Neale's Views of the Seats of Noblemen and Gentlemen in England and Wales, Scotland and Ireland (shown below).

[BACK TO CATALOG INDEX](#)



Printing in a single color on earthenware and stoneware 1820-1850

[View All](#)



Landscapes and Waterscapes

[View All](#)



Grapevine Border - Enoch Wood & Sons

[View All](#)



Examples by Maker

[View All](#)



Print Type Indexd

[View All](#)