

[View PDF](#)

Underglaze

Printing in a single color on earthenware and stoneware 1820-1850

[Add to My Gallery](#) | [Create an Album](#)

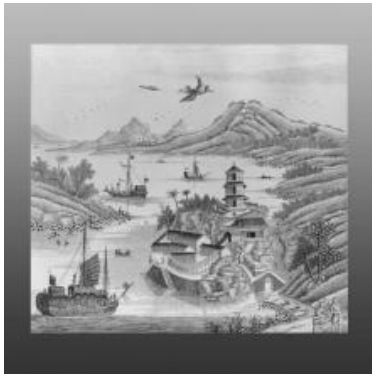


**Pattern**



[enlarge \[+\]](#)

## Source



[enlarge \[+\]](#)

## Source Description:

Source print's origins are unknown. It was published, or possibly re-published in 1753 as part of a portfolio of twenty pictures by various artists. The caption under the engraving reads *The Figure of Heaven is all Delightful--A View of the Temple serv'd by Eunuchs, & of the delicious Round Island*  
*expand [+]*

Shape Type

Dinner & Dessert Wares

Pattern Type

Chinese, Asian and Other Exotic Themes

Date

1820-1830

Dimensions

- Length: 19.00 in (48.26 cm)

- Width: 16.50 in (41.91 cm)

Maker

John & William Ridgway

**Maker's Mark:**



Printed

[enlarge \[+\]](#)

**Description:**

A large earthenware platter with a molded gadroon border printed in blue in the India Temple pattern. This pattern is copied from a source print shown below. The central pattern is framed in the Catherine's Wheel border and the principal border is of a floral and geometric shape motif.

[BACK TO CATALOG INDEX](#)



Printing in a single color on earthenware and stoneware 1820-1850

[View All](#)



Chinese, Asian and Other Exotic Themes

[View All](#)



Examples by Maker

[View All](#)



Print Type Indexd

[View All](#)