

[View PDF](#)

Underglaze

Printing on porcelain 1750-1800

[Add to My Gallery](#) | [Create an Album](#)



Additional Image:



[enlarge \[+\]](#)

Each side of this moulded potted meat dish is decorated with the Early Floral Print within the reserves.



[enlarge \[+\]](#)

This is one of the two subsidiary early floral prints that appear on either end of the potted meat dish.

Shape Type

Dinner & Dessert Wares

Pattern Type

Chinese, Asian and Other Exotic Themes

Date

1758-1760

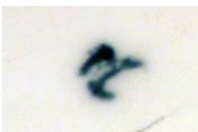
Dimensions

- Length: 5.25 in (13.34 cm)

Maker

Worcester

Maker's Mark:



Painted

[enlarge \[+\]](#)

Description:

This potted meat dish is decorated with a range of rare prints. In the interior is the Floral Gift. On the exterior, each long side is printed with the Early Peony Print and at either end are two related but different floral prints. The bottom of the dish bears a painted mark that is difficult to decipher. It is highly unusual for porcelain with printed decoration

[expand \[+\]](#)

[BACK TO CATALOG INDEX](#)



Printing on porcelain 1750-1800

[View All](#)



Chinese, Asian and Other Exotic Themes

[View All](#)



Examples by Maker

[View All](#)



Print Type Indexd

[View All](#)