

[View PDF](#)

Underglaze

Printing in a single color on earthenware and stoneware 1820-1850

[Add to My Gallery](#) | [Create an Album](#)



Pattern



[enlarge \[+\]](#)

Source



[enlarge \[+\]](#)

Source Description:

A small portion taken from the right side of View of Newburgh, New York, a drawing by W. G. Hall, showing the small cluster of houses with two cows pastured in front, one standing and the other lying down. The drawing was engraved and printed by Fenner, Sears & Co.; published *expand [+]*

Shape Type

Dinner & Dessert Wares

Pattern Type

Landscapes and Waterscapes

Date

1831-1835

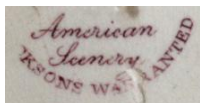
Dimensions

- Diameter: 4.10 in (10.41 cm)

Maker

Job and John Jackson

Maker's Mark:



Printed

[enlarge \[+\]](#)



Mark:

[enlarge \[+\]](#)

Description:

An earthenware cup plate with a gadroon edge, printed in purple with a portion of Newburgh, New York, from the American Scenery Series; just the actual small village was employed for this small cup plate. Despite its small size, the cup plate contains the full series border, albeit much smaller in size than the larger pieces. The printed mark reads "American Scenery, JACKSON'S WARRANTED".

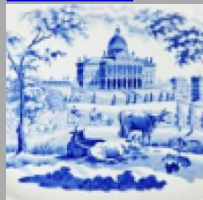
[expand \[+\]](#)

[BACK TO CATALOG INDEX](#)



Printing in a single color on earthenware and stoneware 1820-1850

[View All](#)



Landscapes and Waterscapes

[View All](#)



American Scenery - Job and John Jackson

[View All](#)



Examples by Maker

[View All](#)



Print Type Indexd

[View All](#)