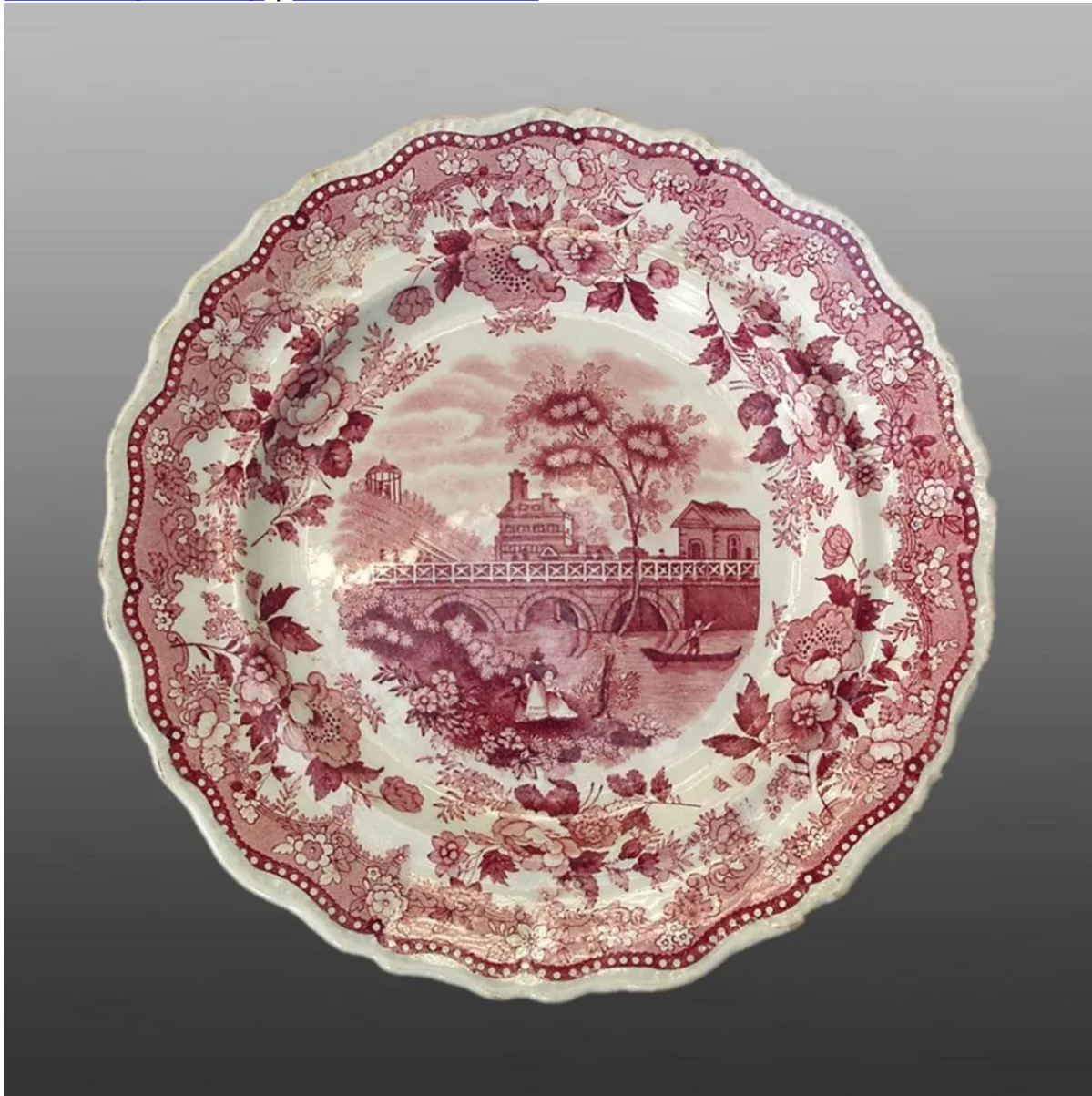


[View PDF](#)

Underglaze

Printing in a single color on earthenware and stoneware 1820-1850

[Add to My Gallery](#) | [Create an Album](#)



**Pattern**



[enlarge \[+\]](#)

## Source



[enlarge \[+\]](#)

## Source Description:

The Race Bridge, Fair Mount Waterworks, Philadelphia, a drawing by Charles Burton. Engraved and printed by Fenner, Sears & Co.; published in *The History and Topography of the United States*, edited by John Howard Hinton A. M., by Isaac Taylor Hinton, Simpkin and Marshall, London, March 15, 1831.

Shape Type

Dinner & Dessert Wares

Pattern Type

Landscapes and Waterscapes

Date

1831-1835

Dimensions

- Diameter: 9.00 in (22.86 cm)

Maker

Job and John Jackson

**Maker's Mark:**



Printed

[enlarge \[+\]](#)

**Description:**

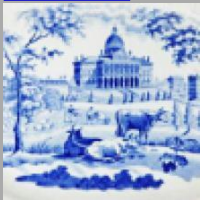
An earthenware plate printed in pink with the image of The Race Bridge, Philadelphia, encircled by sprays of roses which extend from the inner border into the well of the dish, a wreath of smaller flowers scattered on a stippled field, a beaded band and a white margin on the scalloped gadroon edge.

[BACK TO CATALOG INDEX](#)



Printing in a single color on earthenware and stoneware 1820-1850

[View All](#)



Landscapes and Waterscapes

[View All](#)



American Scenery - Job and John Jackson

[View All](#)



Examples by Maker

[View All](#)



Print Type Indexd

[View All](#)