

[View PDF](#)

Overglaze

Printing on Porcelain 1800-1900

[Add to My Gallery](#) | [Create an Album](#)



Pattern



[enlarge \[+\]](#)

Source



[enlarge \[+\]](#)

Source Description:

Print number P.422 is a simplified version of George Morland's painting of 1792 Morning or the Benevolent Sportsman which hangs in the Fitzwilliam Museum, Cambridge.

Additional Image:



[enlarge \[+\]](#)

Side view of porter mug showing handle.

Shape Type

Miscellaneous

Pattern Type

Animals

Date

1808 - 1812

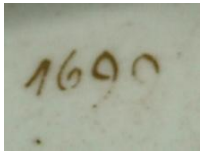
Dimensions

- Diameter: 4.25 in (10.80 cm)
- Height: 3.50 in (8.89 cm)

Maker

Spode

Maker's Mark:



Painted

[enlarge \[+\]](#)

Description:

A porter mug bat printed in gold on a mazarine blue ground in pattern 1699 with print number P.422 from the Animal Series. Additional gilded bands and dot and cross decoration overlaze. Print reference Drakard, David and Holdway, Paul. Spode Transfer Printed Ware, 1784-1833. Woodbridge, Suffolk, Antique Collector's Club, Inc., 2002.

[BACK TO CATALOG INDEX](#)



Printing on Porcelain 1800-1900

[View All](#)



Animals

[View All](#)



Examples by Maker

[View All](#)



Print Type Indexd

[View All](#)