

[View PDF](#)

Overglaze

Printing on Porcelain 1800-1900

[Add to My Gallery](#) | [Create an Album](#)



**Additional Image:**



[enlarge \[+\]](#)

A matching saucer to the breakfast cup measuring 6.5 inches in diameter, but printed as the cup but with print numbers P.442, P.446 and P.447 and P.125.

Shape Type

Breakfast & Tea Wares

Pattern Type

Animals

Date

1833 - 1847

Dimensions

- Diameter: 4.00 in (10.16 cm)
- Height: 2.75 in (6.99 cm)

Maker

Copeland & Garrett

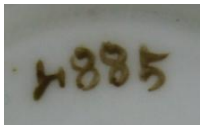
**Maker's Mark:**



Printed

[enlarge \[+\]](#)

**Maker's Mark:**



Painted

[enlarge \[+\]](#)

## Description:

A breakfast cup bat printed in green on a pale yellow underglaze ground colour with additional brown enamel painted decoration overglaze, pattern number 4885. Print numbers P.442 and P.446 from the Birds in Garden Landscapes Series and P.125 from the Flowers and Fruit Series. Print reference Drakard, David and Holdway, Paul. Spode Transfer Printed Ware, 1784-1833. Woodbridge, Suffolk, Antique Collector's Club, Inc., 2002.

[BACK TO CATALOG INDEX](#)



Printing on Porcelain 1800-1900

[View All](#)



Animals

[View All](#)



Examples by Maker

[View All](#)



Print Type Indexd

[View All](#)