

[View PDF](#)

Overglaze

Printing on Porcelain 1800-1900

[Add to My Gallery](#) | [Create an Album](#)



Shape Type

Dinner & Dessert Wares

Pattern Type

Landscapes and Waterscapes

Date

1800 - 1805

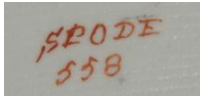
Dimensions

- Length: 12.00 in (30.48 cm)
- Width: 9.00 in (22.86 cm)

Maker

Spode

Maker's Mark:



Painted

[enlarge \[+\]](#)

Description:

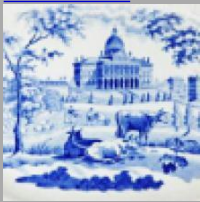
A large tureen stand with combed base in pattern number 558 having an elaborate gilded patterned border. Bat printed in charcoal grey with print number P.226 from the Landscapes Series. Print reference Drakard, David and Holdway, Paul. Spode Transfer Printed Ware, 1784-1833. Woodbridge, Suffolk, Antique Collector's Club, Inc., 2002.

[BACK TO CATALOG INDEX](#)



Printing on Porcelain 1800-1900

[View All](#)



Landscapes and Waterscapes

[View All](#)



Examples by Maker

[View All](#)



Print Type Indexd

[View All](#)