

[View PDF](#)

Overglaze

Printing on Earthenware and Stoneware 1750-1800

[Add to My Gallery](#) | [Create an Album](#)



National Museums Liverpool 12.3.26.2

Pattern



[enlarge \[+\]](#)

Source



[enlarge \[+\]](#)

Source Description:

"The Tythe Pig" engraved by J.S. Muller after Boitard, 1751. "In Country Village lives a Vicar, / Fond - as all are - of Tythes and Liquor, / To Mirth his Ears are seldom Shut, / He'll Crack a Joke, and laugh at Smut; / But when his Tythes he gathers
expand [+]

Shape Type

Dinner & Dessert Wares

Pattern Type

Genre Scenes

Date

1757-61

Dimensions

- Diameter: 22.40 in (56.90 cm)
- Height: 2.70 in (6.86 cm)

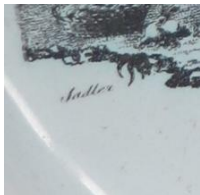
Maker

Unknown

Printer's Name

John Sadler

Printer's Mark:



Printed

[enlarge \[+\]](#)

Description:

Tin-glazed earthenware (so-called delftware) plate printed in black by John Sadler, Liverpool, with "The Tythe Pig", a satire on the tythes or taxes that had to be paid to the parish priest. The priest claims a pig but the farmer's wife thwarts him by adding the condition that he must take the baby. The print is signed "John Sadler" to one side and "Liverp" to

[expand \[+\]](#)

[BACK TO CATALOG INDEX](#)



Printing on Earthenware and Stoneware 1750-1800

[View All](#)



Genre Scenes

[View All](#)



Examples by Maker

[View All](#)



Examples by Printer

[View All](#)



Print Type Indexd

[View All](#)