

[View PDF](#)

Underglaze

Printing in a single color on earthenware and stoneware 1820-1850

[Add to My Gallery](#) | [Create an Album](#)



Pattern



[enlarge \[+\]](#)

Source



[enlarge \[+\]](#)

Source Description:

Brahmin-Bull House, London Zoological Gardens by George Scharf the elder, c. 1833

Shape Type

Dinner & Dessert Wares

Pattern Type

Animals

Date

1830-1835

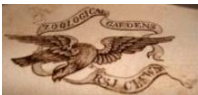
Dimensions

- Length: 17.50 in (44.45 cm)
- Width: 14.50 in (36.83 cm)

Maker

Ralph & James Clews

Maker's Mark:



Printed

[enlarge \[+\]](#)

Description:

The London Zoological Gardens opened on April 27, 1828 as a center for scientific research. The Staffordshire potters, always seeking to capitalize on popular culture, produced series that depicted the zoo. Clews produced Zoological Gardens that showed different center patterns on almost each size and shape, usually copied from lithographs and books of the early zoo. Seen here is the Brahmin-Bull House. The pattern

[expand \[+\]](#)

[BACK TO CATALOG INDEX](#)



Printing in a single color on earthenware and stoneware 1820-1850

[View All](#)



Animals

[View All](#)



Examples by Maker

[View All](#)



Print Type Indexd

[View All](#)