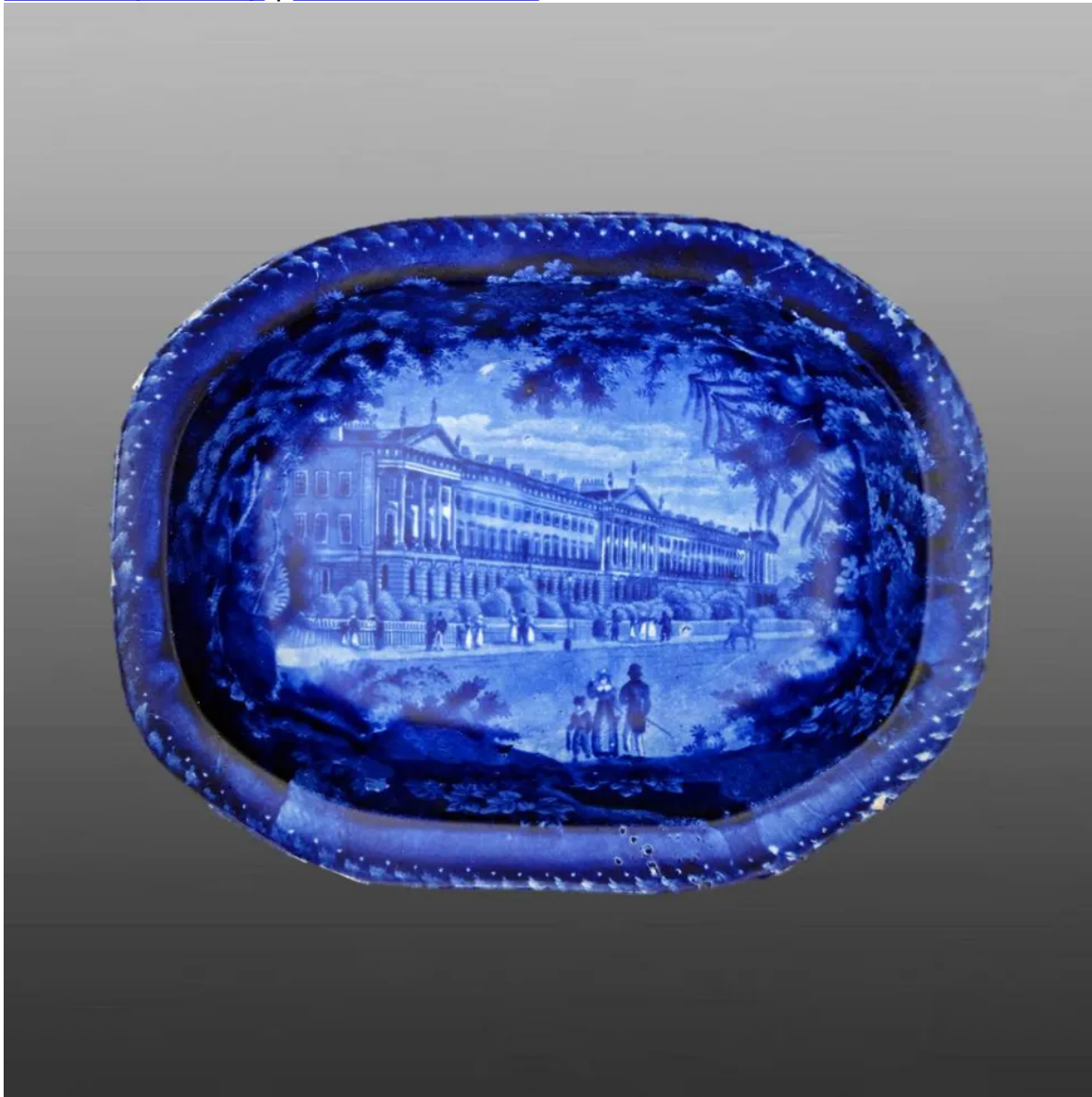


[View PDF](#)

Underglaze

Printing in a single color on earthenware and stoneware 1820-1850

[Add to My Gallery](#) | [Create an Album](#)



Pattern



[enlarge \[+\]](#)

Source



[enlarge \[+\]](#)

Source Description:

Hanover Terrace Hanover Terrace, designed by John Nash and built in 1823 is situated on the west side of the Park. It is composed of one long three storied building divided into twenty large and expensive town houses. The central and terminal Doric portico-ed pavilions are decorated with Terra-cotta statuary. Each house has a small back

[expand \[+\]](#)

Shape Type

Dinner & Dessert Wares

Pattern Type

Landscapes and Waterscapes

Date

1827-1829

Dimensions

- Height: 1.65 in (4.19 cm)
- Length: 8.15 in (20.70 cm)

- Width: 6.22 in (15.80 cm)

Maker

William Adams III & Son

Maker's Mark:



Printed

[enlarge \[+\]](#)

Maker's Mark:



Impressed

[enlarge \[+\]](#)

Description:

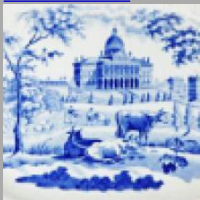
An earthenware deep dish printed in dark blue with the landscape pattern named Hanover Terrace, Regent's Park London.

[BACK TO CATALOG INDEX](#)



Printing in a single color on earthenware and stoneware 1820-1850

[View All](#)



Landscapes and Waterscapes

[View All](#)

Regents Park - Adams

[View All](#)



Examples by Maker

[View All](#)



Print Type Indexd

[View All](#)