

[View PDF](#)

Underglaze

Printing in a single color on earthenware and stoneware 1780-1820

[Add to My Gallery](#) | [Create an Album](#)



**Pattern**



[enlarge \[+\]](#)

### Source



[enlarge \[+\]](#)

### Source Description:

The Common Wolf Trap by Samuel Howitt is plate 33 of *Oriental Field Sports* by Thomas Williamson, London, 1807. The aquatint is 17 x 12 inches and was engraved by Henri Merke. Animals in the border are from the same book.

Shape Type

Dinner & Dessert Wares

Pattern Type

Chinese, Asian and Other Exotic Themes

Date

1809 - 1833

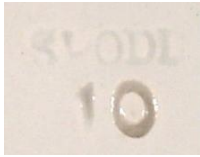
Dimensions

- Diameter: 8.25 in (20.96 cm)

Maker

Spode

**Maker's Mark:**



Impressed

[enlarge \[+\]](#)

**Maker's Mark:**

COMMON WOLF TRAP

Printed

[enlarge \[+\]](#)

**Description:**

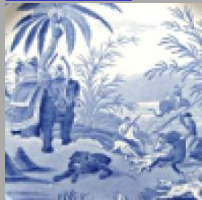
An earthenware side plate printed in blue with the Common Wolf Trap pattern. Pattern number P904-17; Drakard, David and Holdway, Paul. Spode Transfer Printed Ware, 1784-1833. Woodbridge, Suffolk Antique Collector's Club, Inc., 2002.

[BACK TO CATALOG INDEX](#)



Printing in a single color on earthenware and stoneware 1780-1820

[View All](#)



Chinese, Asian and Other Exotic Themes

[View All](#)



Indian Sporting - Spode

[View All](#)



Examples by Maker

[View All](#)



Print Type Indexd

[View All](#)