

[View PDF](#)

Underglaze

Printing on porcelain 1800-1900

[Add to My Gallery](#) | [Create an Album](#)



**Pattern**



[enlarge \[+\]](#)

### Source



[enlarge \[+\]](#)

### Source Description:

Chinese Export Porcelain OriginalThe design on this hand-painted saucer was the source for both the Mandarin (Willow Nankin) and Standard Willow patterns. It was named Two Birds by H. A. Crosby Forbes during his research of Chinese blue and white patterns. It was copied on porcelain c. 1780 at Caughley  
[expand \[+\]](#)

Shape Type

Breakfast & Tea Wares

Pattern Type

Chinese, Asian and Other Exotic Themes

Date

1800-1820

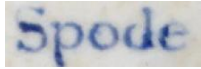
Dimensions

- Diameter: 7.13 in (18.11 cm)

Maker

Spode

**Maker's Mark:**



Printed

[enlarge \[+\]](#)

**Description:**

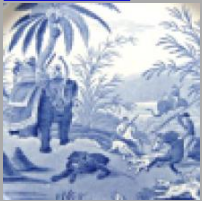
A bone china plate underglaze printed in medium blue with the Mandarin II pattern. Overglaze gilding to the rim.

[BACK TO CATALOG INDEX](#)



Printing on porcelain 1800-1900

[View All](#)



Chinese, Asian and Other Exotic Themes

[View All](#)



Examples by Maker

[View All](#)



Print Type Indexd

[View All](#)