

[View PDF](#)

Underglaze

Printing in a single color on earthenware and stoneware 1780-1820

[Add to My Gallery](#) | [Create an Album](#)



Pattern



[enlarge \[+\]](#)

Source



[enlarge \[+\]](#)

Source Description:

Shooting at the Edge of a Jungle by Samuel Howitt is plate 27 of Oriental Field Sports by Thomas Williamson, London, 1807. The aquatint is 16.75 x 11.75 inches and was engraved by J. Hamble. Animals in the border are from the same book.

Additional Image:



[enlarge \[+\]](#)

The stand surmounted by its soup tureen and lid.

Shape Type

Dinner & Dessert Wares

Pattern Type

Chinese, Asian and Other Exotic Themes

Date

1809 - 1833

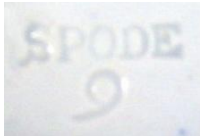
Dimensions

- Length: 17.00 in (43.18 cm)
- Width: 12.13 in (30.81 cm)

Maker

Spode

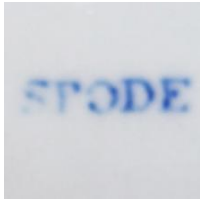
Maker's Mark:



Impressed

[enlarge \[+\]](#)

Maker's Mark:



Printed

[enlarge \[+\]](#)

Description:

An earthenware soup tureen stand printed in blue with the Shooting at the Edge of a Jungle pattern. Pattern number 904-6; reference Drakard, David and Holdway, Paul. Spode Transfer Printed Ware, 1784-1833. Woodbridge, Suffolk Antique Collector's Club, Inc., 2002. Shown below is an image of the soup tureen on its stand.

[BACK TO CATALOG INDEX](#)



Printing in a single color on earthenware and stoneware 1780-1820

[View All](#)



Chinese, Asian and Other Exotic Themes

[View All](#)



Indian Sporting - Spode

[View All](#)



Examples by Maker

[View All](#)



Print Type Indexd

[View All](#)