

[View PDF](#)

Overglaze

Printing on Earthenware and Stoneware 1800-1900, printed and painted

[Add to My Gallery](#) | [Create an Album](#)



Shape Type

Breakfast & Tea Wares

Pattern Type

Plants

Date

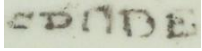
1812 - 1815

Dimensions

- Diameter: 4.00 in (10.16 cm)
- Height: 2.50 in (6.35 cm)

Maker
Spode

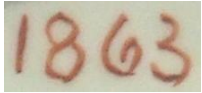
Maker's Mark:



Printed

[enlarge \[+\]](#)

Maker's Mark:



Painted

[enlarge \[+\]](#)

Worker's Mark:



Painted

[enlarge \[+\]](#)

Description:

A low round earthenware Egyptian milk jug in pattern 1863, printed overglaze in black with the pluck and dust technique in the pattern named Rose Border. The print was then over washed with pink, green and yellow enamels. The rim and footrim were decorated with brown enamel and brown enamel line on handle. Print number P521, reference Drakard, David and Holdway, Paul. Spode Transfer
[expand \[+\]](#)

[BACK TO CATALOG INDEX](#)



Printing on Earthenware and Stoneware 1800-1900

[View All](#)



Plants

[View All](#)



Examples by Maker

[View All](#)



Printed & Painted

[View All](#)



Print Type Indexd

[View All](#)