

[View PDF](#)

Overglaze

Printing on Earthenware and Stoneware 1800-1900, printed and painted

[Add to My Gallery](#) | [Create an Album](#)



**Additional Image:**



[enlarge \[+\]](#)

Matching teapot and cover from same service.



[enlarge \[+\]](#)

Matching sucrier and cover from same service.

Shape Type

Breakfast & Tea Wares

Pattern Type

Plants

Date

1807 - 1812

Dimensions

- Diameter: 3.50 in (8.89 cm)
- Height: 6.00 in (15.24 cm)

Maker

Spode

**Maker's Mark:**



Painted

[enlarge \[+\]](#)

## Description:

An earthenware pedestal creamer in drabware, unmarked with the exception of pattern number 1190 in red enamel. Pluck and Dust printed in black with the Vine Border pattern and overwashed with green enamel. Green enamel bands around rims and handle. Print number P.522. Print reference Drakard, David and Holdway, Paul. Spode Transfer Printed Ware, 1784-1833. Woodbridge, Suffolk, Antique Collector's Club, Inc., 2002. The accompanying *expand* [+]

[BACK TO CATALOG INDEX](#)



Printing on Earthenware and Stoneware 1800-1900

[View All](#)



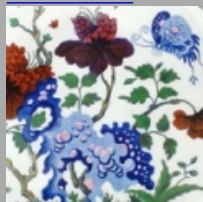
Plants

[View All](#)



Examples by Maker

[View All](#)



Printed & Painted

[View All](#)



Print Type Indexd

[View All](#)