

[View PDF](#)

Underglaze

Printing in a single color on earthenware and stoneware 1780-1820

[Add to My Gallery](#) | [Create an Album](#)



Pattern



[enlarge \[+\]](#)

Source



[enlarge \[+\]](#)

Source Description:

Title: Chinese of Rank, A Artist: Daniell, Thomas and William Engraver /
Plate Maker: Daniell, Thomas and William Size: 7.5 inches x 5 inches Print Date:
1810

Shape Type

Breakfast & Tea Wares

Pattern Type

Chinese, Asian and Other Exotic Themes

Date

1800-1810

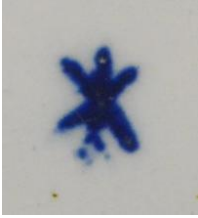
Dimensions

- Diameter: 5.50 in (13.97 cm)

Maker

Spode

Maker's Mark:



Printed

[enlarge \[+\]](#)

Description:

A pearlware deep saucer dish printed in blue in the Chinese of Rank pattern. The source print is shown below. This is a very rare pattern. The only other piece yet found with a Spode mark is an egg-cup stand. This example has a Spode workman's mark, Copeland's mark WMT10. Print number P632, reference Drakard, David and Holdway, Paul. Spode Transfer Printed Ware 1784-1833. Woodbridge, Suffolk:
[expand \[+\]](#)

[BACK TO CATALOG INDEX](#)



Printing in a single color on earthenware and stoneware 1780-1820

[View All](#)



Chinese, Asian and Other Exotic Themes

[View All](#)



Examples by Maker

[View All](#)



Print Type Indexd

[View All](#)