

[View PDF](#)

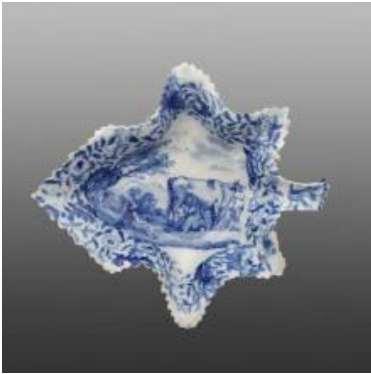
Underglaze

Printing in a single color on earthenware and stoneware 1780-1820

[Add to My Gallery](#) | [Create an Album](#)

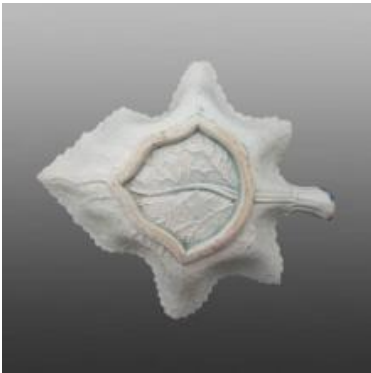


Additional Image:



[enlarge \[+\]](#)

Shown here is another example of the Milkmaid pattern printed horizontally in blue on a molded pickle dish.



[enlarge \[+\]](#)

A view of the back of the molded pickle dish is provided here.

Shape Type

Dinner & Dessert Wares

Pattern Type

Animals

Date

1810-1815

Dimensions

- Diameter: 5.50 in (13.97 cm)
- Height: 1.50 in (3.81 cm)

Maker

Unknown

Description:

An earthenware molded pickle dish printed in blue in what is commonly referred to as the Milkmaid pattern from the Durham Ox Series. These dishes were printed with the pattern viewed vertically as well as horizontally. See an example of the latter

below. These examples were printed without the inner border used on most patterns and shapes.

[BACK TO CATALOG INDEX](#)



Printing in a single color on earthenware and stoneware 1780-1820

[View All](#)



Animals

[View All](#)



Durham Ox - Maker Unknown

[View All](#)



Examples by Maker

[View All](#)



Print Type Indexd

[View All](#)