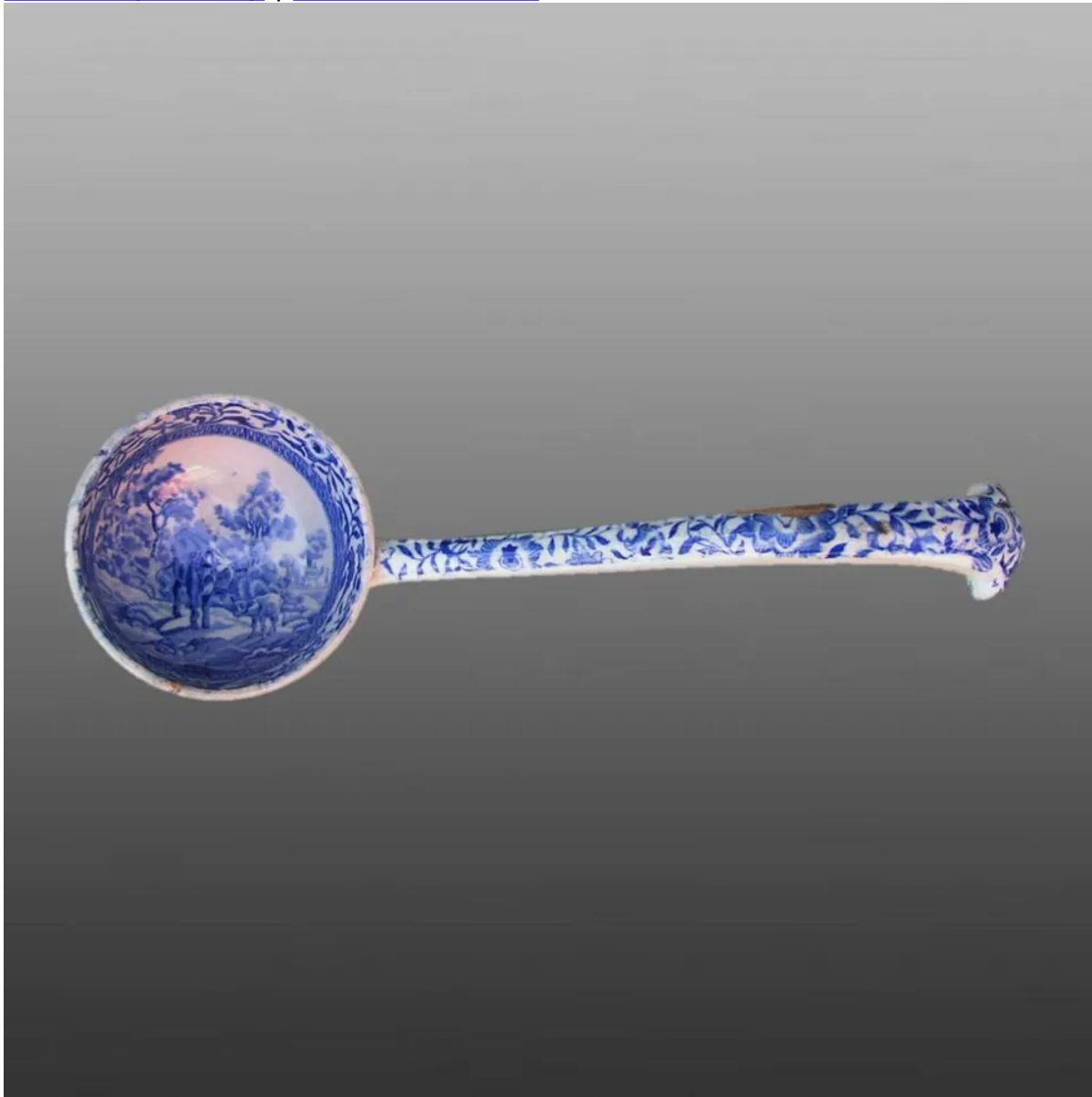


[View PDF](#)

Underglaze

Printing in a single color on earthenware and stoneware 1780-1820

[Add to My Gallery](#) | [Create an Album](#)



Additional Image:



[enlarge \[+\]](#)

Shown here is a close up of the pattern printed on the ladle.

Shape Type

Dinner & Dessert Wares

Pattern Type

Animals

Date

1810-1815

Dimensions

- Diameter: 2.25 in (5.72 cm)
- Height: 6.50 in (16.51 cm)

Maker

Unknown

Description:

An earthenware sauce ladle printed in blue with a portion of a pattern depicting a cow with her calf from the Durham Ox Series.

[BACK TO CATALOG INDEX](#)



Printing in a single color on earthenware and stoneware 1780-1820

[View All](#)



Animals

[View All](#)



Durham Ox - Maker Unknown

[View All](#)



Examples by Maker

[View All](#)



Print Type Indexd

[View All](#)