

[View PDF](#)

Underglaze

Printing in a single color on earthenware and stoneware 1820-1850

[Add to My Gallery](#) | [Create an Album](#)



Pattern



[enlarge \[+\]](#)

Source



[enlarge \[+\]](#)

Source Description:

Title: Ponte Salario Engraver / Plate Maker: J. Merigot, 28 Haymarket, and R. Edwards, 142 New Bond St. Print Date: February 1, 1798 This bridge, built over the Anio, or Teverone, is two miles from the Porta Salara. An inscription informs us that it was destroyed by Totila, and rebuilt by Narses, after
expand [+]

Additional Image:



[enlarge \[+\]](#)

A view of the one end of the piece revealing the skillful application of the pattern.

Shape Type

Miscellaneous

Pattern Type

Landscapes and Waterscapes

Date

1820-1833

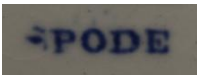
Dimensions

- Height: 4.00 in (10.16 cm)
- Length: 8.50 in (21.59 cm)

Maker

Spode

Maker's Mark:



Printed

[enlarge \[+\]](#)

Description:

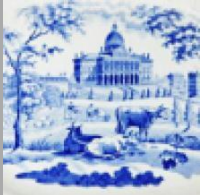
An earthenware dog bowl printed in blue in Spode's popular Tower pattern. The maker used the same border found in the pottery's Milkmaid pattern. Tower was used not only on table wares but on a number of different utility shapes as well. Its popularity and production lasted well into the twentieth century. Continuing interest in the pattern is reflected in twenty-first century reproductions.

[BACK TO CATALOG INDEX](#)



Printing in a single color on earthenware and stoneware 1820-1850

[View All](#)



Landscapes and Waterscapes

[View All](#)



Examples by Maker

[View All](#)



Print Type Indexd

[View All](#)