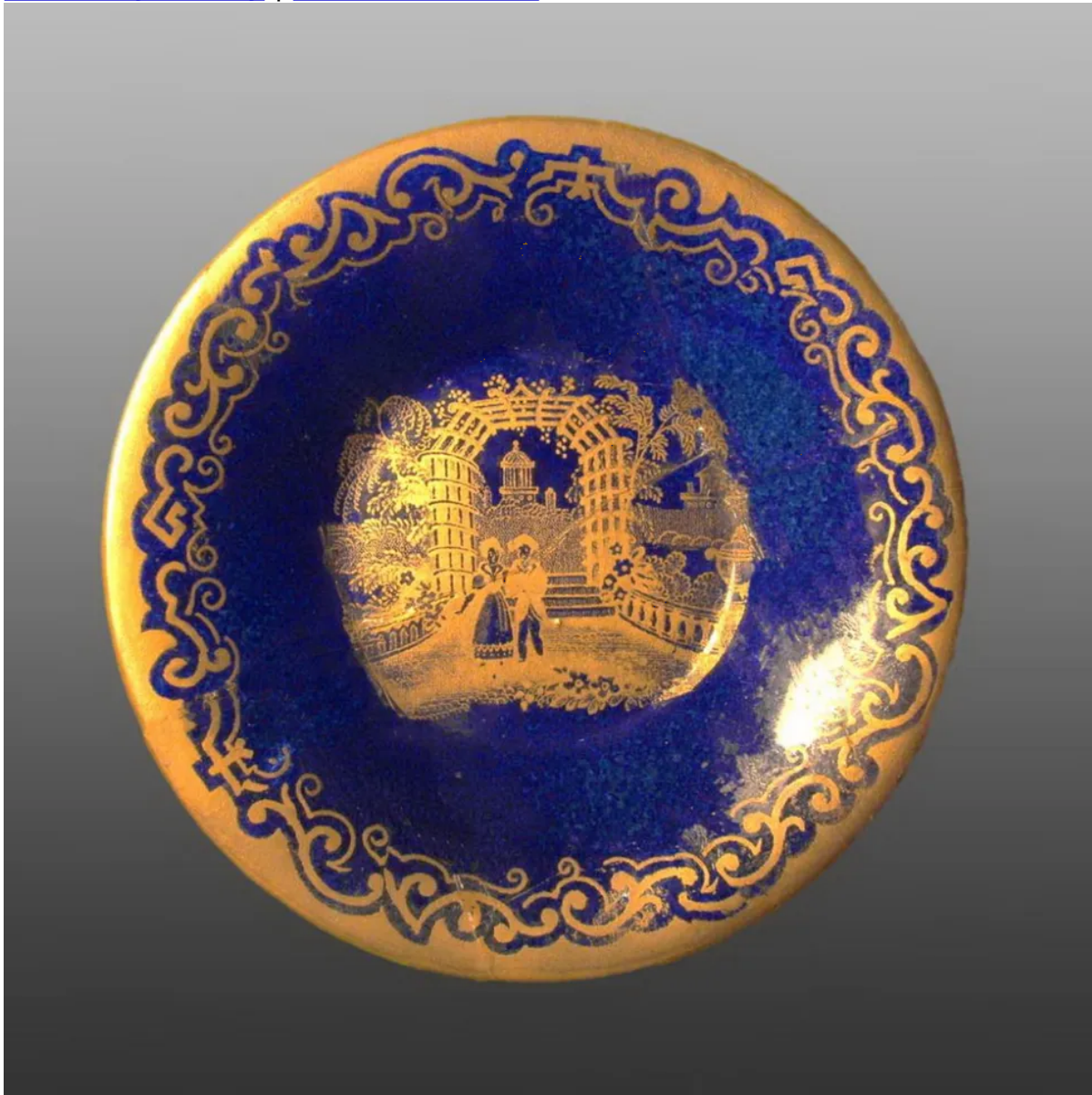


[View PDF](#)

Overglaze

Printing on Earthenware and Stoneware 1800-1900

[Add to My Gallery](#) | [Create an Album](#)



Additional Image:



[enlarge \[+\]](#)

Shown here is the accompanying coffee cup.

Shape Type

Breakfast & Tea Wares

Pattern Type

Genre Scenes

Date

1840-1860

Dimensions

- Diameter: 4.00 in (10.16 cm)

Maker

Davenport

Engraver's Name

James Cutts

Maker's Mark:



Printed

[enlarge \[+\]](#)

Description:

A saucer from a coffee set. The pattern, named Italian Verandah, is printed on a dark blue ground. The mark includes the pattern name and the name of the engraver, James Cutts of Snow Hill, Shelton, who worked as an independent engraver in Staffordshire ca. 1834-70. A number of pulls from his original copper plates are in V&A print collection. His scenes are rather

expand [+]

BACK TO CATALOG INDEX



Printing on Earthenware and Stoneware 1800-1900

[View All](#)



Genre Scenes

[View All](#)



Examples by Maker

[View All](#)



Examples by Engraver

[View All](#)



Print Type Indexd

[View All](#)