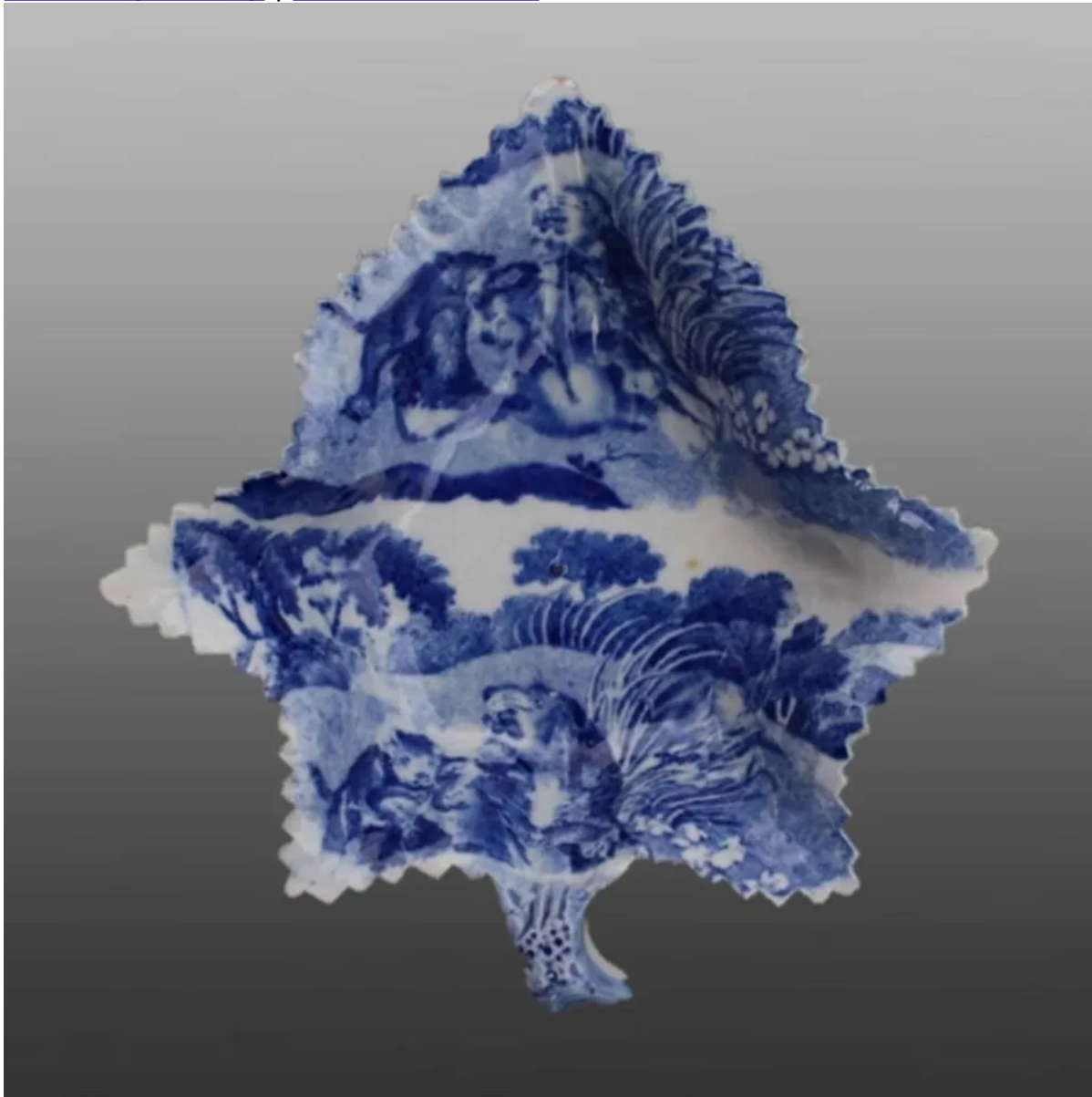


[View PDF](#)

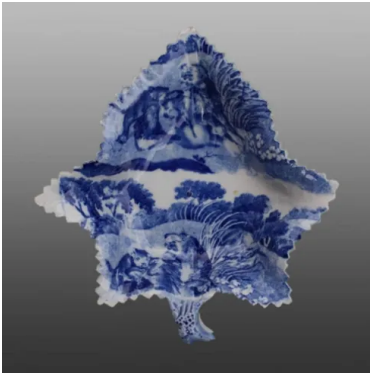
Underglaze

Printing in a single color on earthenware and stoneware 1780-1820

[Add to My Gallery](#) | [Create an Album](#)



**Pattern**



[enlarge \[+\]](#)

### Source

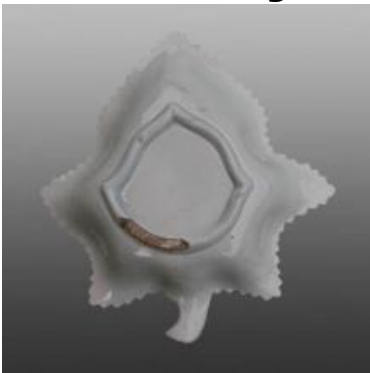


[enlarge \[+\]](#)

### Source Description:

The Lioness, from The Cyclopaedia of Arts, Sciences and Literature, Longman, Hurst, Rees and Orme, 1807.

### Additional Image:



[enlarge \[+\]](#)

View of underside.

Shape Type

Dinner & Dessert Wares

Pattern Type

Animals

Date

1809 - 1820

Dimensions

- Height: 6.50 in (16.51 cm)

Maker

Benjamin Adams

**Description:**

An earthenware pickle dish printed in blue in Adams' Lions pattern. The print on the pickle dish is made up of two prints of the lioness and her cubs. The full pattern seen on flatware also includes the lion. See the source print of the Lioness shown below. This pattern is believed to have been made by both William and Benjamin Adams.

[BACK TO CATALOG INDEX](#)



Printing in a single color on earthenware and stoneware 1780-1820

[View All](#)



Animals

[View All](#)



Examples by Maker

[View All](#)



Print Type Indexd

[View All](#)