

[View PDF](#)

Overglaze

Printing on Porcelain 1750-1800

[Add to My Gallery](#) | [Create an Album](#)



Collection of Winterthur Museum

Shape Type

Breakfast & Tea Wares

Pattern Type

Genre Scenes

Date

1755-1770

Dimensions

- Diameter: 4.80 in (12.19 cm)

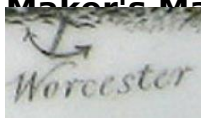
Maker

Worcester

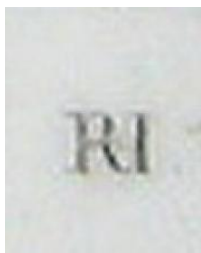
Engraver's Name

Robert Hancock

Maker's Mark:



[enlarge \[+\]](#)



Mark:

[enlarge \[+\]](#)

Description:

This soft-paste porcelain saucer is printed in black with a pattern, commonly known as the Tea Party. It is one of the most commonly seen prints on Worcester porcelain and occurs in three main versions, this design has been designated Tea Party No. 2. The 'Tea Party' series of prints may be found on other ceramics. It is suggested that the source of the print can be *expand* [+]

[BACK TO CATALOG INDEX](#)



Printing on Porcelain 1750-1800

[View All](#)



Genre Scenes

[View All](#)



Examples by Maker

[View All](#)



Examples by Engraver

[View All](#)



Print Type Indexd

[View All](#)